

Johns West Moors, Dorset



Key Features

- Communal gardens
- Off-road parking (subject to availability)
- Sheltered Housing Officer Service
- Emergency Careline unit in each flat
- Communal room

The Scheme

Built in 1975, Johns is a sheltered housing scheme for elderly sheltered tenants.

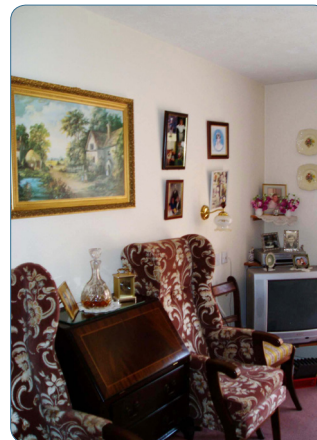
Located close to amenities in central West Moors and extended in 2004, the scheme now comprises 16 x one bedroom flats. Two of the ground floor flats are adapted to full mobility disability standards. The scheme also benefits from a Community Room.

Services

As a sheltered housing scheme tenants of Johns will receive visits one day a week from a Sheltered Housing Officer, along with regular welfare calls each week.

All support is tailored to individual's needs and East Boro also operates a telephone Reassurance Service so that tenants can contact Support Staff.

In addition, all flats are fitted with a Careline unit, allowing tenants to access help in an emergency 24 hours a day, every day of the year.



For more information about any East Boro housing scheme, please contact:

East Boro Housing Trust

Faulkner House, 31 West Street, Wimborne, Dorset BH21 1JS

t: 01202 883503

e: info@ebht.org.uk

w: www.ebht.org.uk